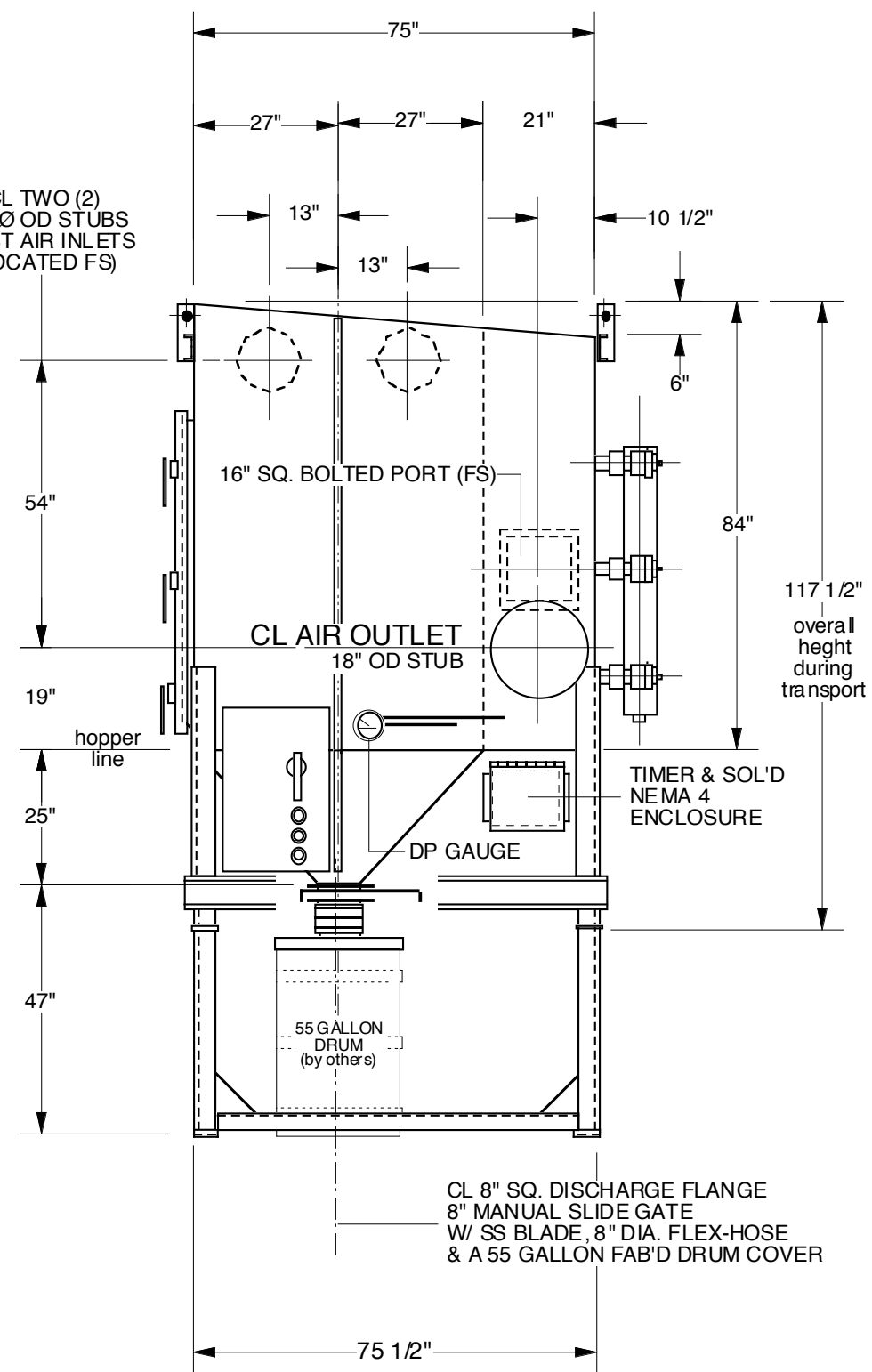


CL TWO (2)  
12" Ø OD STUBS  
DUST AIR INLETS  
(LOCATED FS)

CINCINNATI FAN  
MODEL NO. HDBI-160  
ARR. 4 W/ 20 HP MOTOR  
6,000 ACFM AT 12" SP  
ROTATION: CW-UB

CL'S  
12 X 4 X 25.82  
FORK LIFT  
TUBES



hopper  
line

55 GALLON  
DRUM  
(by others)

CL 8" SQ. DISCHARGE FLANGE  
8" MANUAL SLIDE GATE  
W/ SS BLADE, 8" DIA. FLEX-HOSE  
& A 55 GALLON FAB'D DRUM COVER

NOTE: TWO (2) IDENTICAL UNITS REQUIRED

OPERATING DATA					
AIR VOLUME	6,000 ACFM				
DUST	PAINT FINES & IRON OXIDE				
OPERATING PRESSURE	12" WG				
TEMPERATURE	AMBIENT				
DUST SIZE	VERY FINE				
DUST LOADING	LESS THAN 1 GR./CU. FT.				
END USE	NUISANCE VENTILATION				
DESIGN DATA					
MODEL NUMBER	12-HF-31SE				
FILTER AREA	2,496 SQ. FT.				
AIR-TO-CARTRIDGE RATIO	500 ACFM	AIR-TO-FILTER RATIO	2.4/1		
DESIGN PRESSURE	17" WG				
COMPR. AIR REQ'D (CLEAN AND DRY)	6 SCFM @		80 PSIG.		
DEAD WEIGHT	3,600 LBS				
MAXIMUM LOAD					
LOCATION	OUTDOOR				
CONSTRUCTION DATA					
CLEAN AIR PLENUM	12 GA. CARBON STEEL				
TUBE SHEET	10 GA. CARBON STEEL				
FILTER PLENUM	12 GA. CARBON STEEL				
HOPPER	12 GA. CARBON STEEL				
AIR HEADER	6" DIA. TUBING				
DIAPHRAGM VALVES	1" DIA. "GOYEN"				
FILTER CARTRIDGES	12" DIA. X 26" LG, 208 SQ. FT. OF FILTER HI. EFFIC. (QX CELLULOSE/POLY. BLEND)				
SHOP NOTES					
ALL WALL & ROOF STIFFENERS TO BE 3" CHANNEL, 4.1. THE ROOF STIFFENER TO BE LOCATED UNDER THE ROOF.					
SHOP TO APPLY A COAT OF GRAY ALKYD PRIMER ON ALL EXTERIOR CARBON STEEL SURFACES, AFTER SP-3 CLEANING, AND A COAT OF S-W SW4086 (SAFETY BLUE) IND'L ENAMEL.					
FOR COLLECTOR DETAILS SEE DWG. C-A7174-1B, S-92002-1A AND S-92004-1A.					
REV.	DESCRIPTION	DATE			
<b>INDUSTRIAL VACUUM</b> EQUIPMENT CORPORATION IXONIA, WISCONSIN <a href="http://www.industrialvacuum.com">www.industrialvacuum.com</a>					
DATE	10/19/07	SCALE	3/8" = 1'-0"	DRAWN BY	K L A
INDUSTRIAL VACUUM - IXONIA, WISCONSIN					
PURCHASE ORDER NO. 17722					
REF.00 ACFM TRANSPORTABLE D/C			DWG. C-A7174-1A		